

IASbaba's Daily Quiz

October 20, 2016

Q.1) Assumption Island was in news recently. It is concerned with which of the following?

- a) China's new naval base near Horn of Africa
- b) Joint Military Exercise of the ASEAN members
- c) India's naval base in Seychelles
- d) Somalian Pirates took over the island

Q.1) Solution (c)

Seychelles government allowed India to build its first Naval Base on the Assumption Island in the Indian Ocean region (IOR) as a joint project between both countries. In this regard, Seychelles government has allocated a plot of land on in its Assumption Island

In News - <http://www.thehindu.com/todays-paper/tp-international/india-seychelles-working-to-ensure-security-in-indian-ocean/article8707047.ece>

Q.2) Consider the following indicators

- 1. Maternal Mortality Ratio
- 2. Female and Male shares of Parliamentary seats
- 3. Female and Male labour force participation rates
- 4. Adolescent Birth Rate

Which of the following indicators is/are considered for Gender Inequality Index?

- a) 2,3 and 4
- b) 1,2 and 4
- c) 1,3 and 4
- d) All of the Above

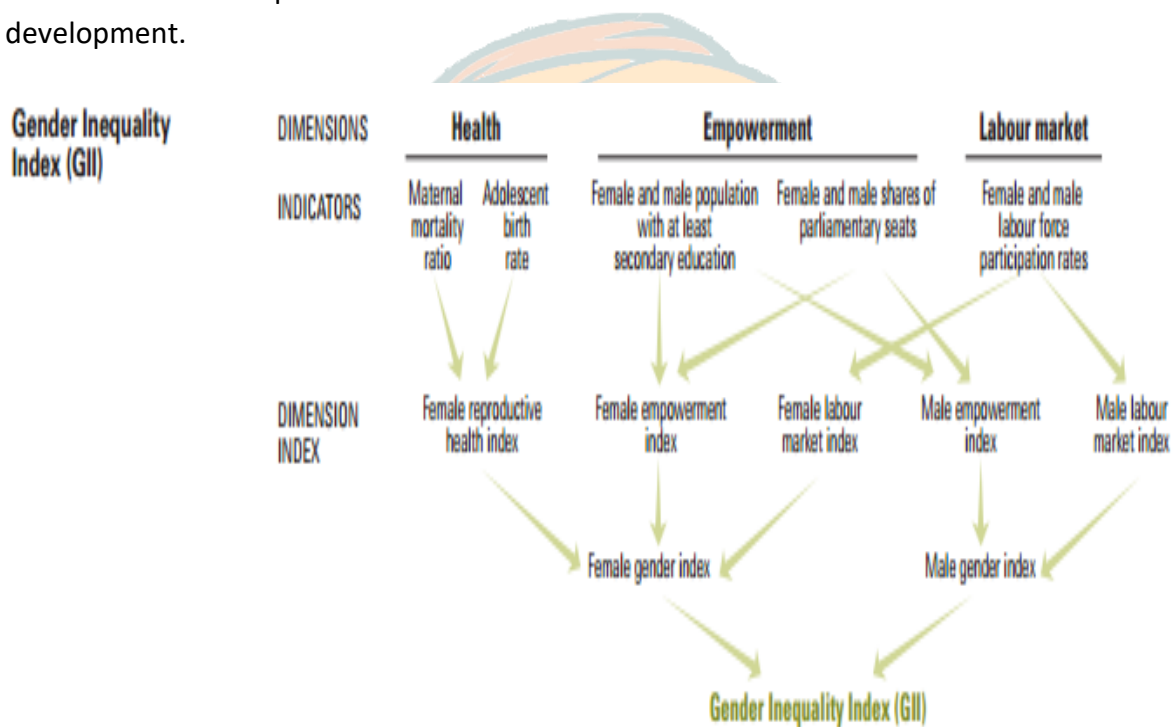
Q.2) Solution (d)

Gender inequality remains a major barrier to human development. Girls and women have made major strides since 1990, but they have not yet gained gender equity. The disadvantages facing women and girls are a major source of inequality. All too often, women and girls are discriminated against in health, education, political representation, labour market, etc — with negative repercussions for development of their capabilities and their freedom of choice.

IASbaba's Daily Quiz

October 20, 2016

The GII is an inequality index. It measures gender inequalities in three important aspects of human development—reproductive health, measured by maternal mortality ratio and adolescent birth rates; empowerment, measured by proportion of parliamentary seats occupied by females and proportion of adult females and males aged 25 years and older with at least some secondary education; and economic status, expressed as labour market participation and measured by labour force participation rate of female and male populations aged 15 years and older. The GII is built on the same framework as the IHDI — to better expose differences in the distribution of achievements between women and men. It measures the human development costs of gender inequality, thus the higher the GII value the more disparities between females and males and the more loss to human development.



Q.3) Consider the following Archipelago pairs:

Islands

Country

1. Balearic Islands : England
2. Archipelago of the Azores : Ecuador
3. Isles of Scilly : Spain

Which of the pairs given above is/are correct?

- a) Only 2
- b) Only 2 and 3
- c) Only 3
- d) None of the Above

IASbaba's Daily Quiz

October 20, 2016

Q.3) Solution (d)

Balearic Islands: Spain

Archipelago of the Azores: Portugal

Galapagos Islands: Ecuador

Isles of Scilly: England

Galapagos Islands in news - <http://www.thehindu.com/todays-paper/tp-national/un-chief-becomes-godfather-to-newborn-galapagos-tortoise/article9241868.ece>

Q.4) Which of the following is a UNESCO World Heritage Mixed Site?

- a) Khangchendzonga National Park
- b) Ajanta Caves
- c) Rock Shelters of Bhimbetka
- d) Manas Wildlife Sanctuary

Q.4) Solution (a)

Khangchendzonga National Park (KNP) in Sikkim is the **only 'mixed' heritage site from India.**

A 'mixed site' exhibits qualities of both natural and cultural significance.

India now has 35 sites, including 27 cultural properties, seven natural sites and one mixed site, notified as World Heritage Sites.

Sikkim's Khangchendzonga National Park, Chandigarh's Capitol Complex and the ruins of Nalanda Mahavira in Bihar were added to World Heritage Sites.

In News - <http://economictimes.indiatimes.com/news/politics-and-nation/why-monuments-would-be-worse-off-without-the-world-heritage-status/articleshow/54757355.cms>

Q.5) Consider the following statements about Gulf of Cambay

1. It is an inlet of the Arabian Sea along the west coast of India in Gujarat

IASbaba's Daily Quiz

October 20, 2016

2. Narmada, Godavari and Sabarmati drains into it

Which of the following statements is/are incorrect?

- a) Only 1
- b) Only 2
- c) Both 1 and 2
- d) Neither 1 nor 2

Q.5) Solution (b)

The Gulf of Cambay (also known as Gulf of Khambhat) is an inlet of the Arabian Sea in the state of Gujarat along the west coast of India. It divides the Kathiawar peninsula to the west from the eastern part of Gujarat state. Narmada, Tapi, Mahi and Sabarmati rivers drain into it.

Godavari flows towards east.

In News - <http://www.thehindubusinessline.com/economy/logistics/indias-first-ro-ro-service-likely-to-begin-in-gujarat-next-year/article9234589.ece>

