

CONNECT TO CONQUER (C2C)



APPROACH PAPER

ETHICS, INTEGRITY AND APTITUDE

Mains Test 8

SYLLABUS FOR MAINS TEST 8

COVERAGE

- Attitude: content, structure, function; its influence and relation with thought and behaviour; moral and political attitudes; social influence and persuasion.
- Aptitude and foundational values for Civil Service, integrity, impartiality and non-partisanship, objectivity, dedication to public service, empathy, tolerance and compassion towards the weaker sections.
- Emotional intelligence-concepts, and their utilities and application in administration and governance.

NEGATIVE

APPROACH

ETHICS, INTEGRITY AND APTITUDE

The questions asked from this component of Paper IV are conceptual as well as applied. You need to understand the concepts of attitude, aptitude and emotional intelligence from the personal as well as professional viewpoint. Always approach the concepts from the perspective of a civil servant who is also a son, brother, father, husband and friend. An example oriented study of these concepts will always help you in the examination.

READING SOURCES

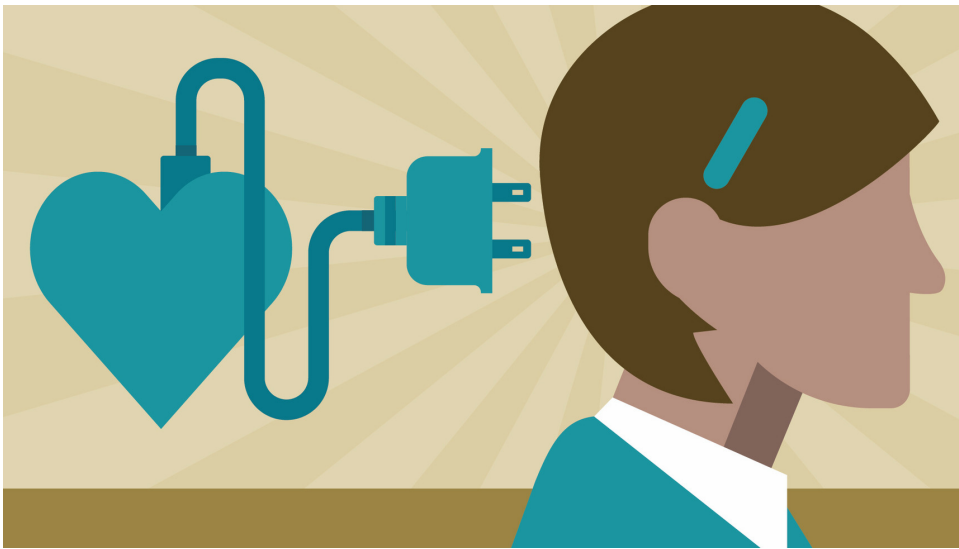
Unfortunately, there is no quality material available for Paper IV. The books, notes, study materials etc are mere compilations from the internet. Still few sources available in the market give you a basic understanding of the concepts. You have to build over and above that information to develop perspectives of your own. Moreover, you must keep a close watch over the news items that have footprints of ethics and governance.

LEXICON

The book gives you the basic understanding of the terms and terminologies given in the syllabus.

ETHICS, INTEGRITY AND APTITUDE BY M KARTHIKEYAN

A detailed book having in depth analysis of all the concepts covered in Paper IV. It can work as a reference textbooks.



FOCUS AREAS

ETHICS, INTEGRITY AND APTITUDE

- Definition of various terms and terminologies mentioned in the syllabus along with their application in public life.
- Examples of the virtues required by a civil servant in his public and private life.
- Difference between emotion and reason.
- Personal and professional integrity

SAMPLE QUESTIONS

ETHICS, INTEGRITY AND APTITUDE

- A civil servant must be politically unaffiliated but one can't expect him/her not to be opinionated. Analyse.
- Attitude shapes our thoughts and behaviour. Do you agree? Substantiate with the help of at least two examples from your personal experiences.
- Why should a civil servant command social influence? Examine.
- There is a general perception that people with impeccable integrity can't survive long in the public services. What is your assessment of this perception? Substantiate.
- What imparts the characteristics of 'services' to civil services in India? Examine with the help of suitable examples.
- Why are values like empathy and tolerance significant in civil services? Discuss.
- An emotionally intelligent person never fails in relationship. Do you agree? Substantiate.
- Why should an administrator have emotionally balanced mind? Examine. Also give suitable examples to illustrate your point of view.
- There are many problems in our personal and private lives that arise due to lack of emotional intelligence. Comment.

CONNECT TO CONQUER (C2C)

IASBABA WISHES YOU

ALL THE BEST