

June 28, 2019

Q.1) Consider the following statements with respect to 'Proton Therapy'

1. It is a treatment that uses high-energy beams to treat tumors.
2. There is less radiation dose outside of the tumor compared to x-ray radiation

Select the correct statements

- a) 1 Only
- b) 2 Only
- c) Both 1 and 2
- d) Neither 1 nor 2

Q.1) Solution (c)

In the field of medical procedures, proton therapy, or proton radiotherapy, is a type of particle therapy that uses a beam of protons to irradiate diseased tissue, most often in the treatment of cancer. The chief advantage of proton therapy over other types of external beam radiotherapy is that as a charged particle the dose is deposited over a narrow range of depth, and there is minimal entry, exit, or scattered radiation dose.

Proton therapy is a type of external beam radiotherapy, and shares risks and side effects of other forms of radiation therapy. However the dose outside of the treatment region can be significantly less for deep-tissue tumors than X-ray therapy, because proton therapy takes full advantage of the Bragg peak.

Q.2) Which of the following statements is/are correct?

1. Housing Finance Companies are regulated by National Housing Bank.
2. Nidhi Companies are regulated by Ministry of Corporate Affairs.

Select the correct statements

- a) 1 Only
- b) 2 Only
- c) Both 1 and 2
- d) Neither 1 nor 2

Q.2) Solution (c)

June 28, 2019

Housing Finance Companies are regulated by National Housing Bank, Merchant Banker/Venture Capital Fund Company/stock-exchanges/stock brokers/sub-brokers are regulated by Securities and Exchange Board of India, and Insurance companies are regulated by Insurance Regulatory and Development Authority. Similarly, Chit Fund Companies are regulated by the respective State Governments and Nidhi Companies are regulated by Ministry of Corporate Affairs, Government of India.

Q.3) Consider the following statements with respect to 'Agricultural and Processed Food Products Export Development Authority (APEDA)

1. It was established under the Food Safety and Standards Act
2. It is mandated with the responsibility of export promotion and development of Guar Gum

Select the correct statements

- a) 1 Only
- b) 2 Only
- c) Both 1 and 2
- d) Neither 1 nor 2

Q.3) Solution (b)

The Agricultural and Processed Food Products Export Development Authority (APEDA) was established by the Government of India under the Agricultural and Processed Food Products Export Development Authority Act passed by the Parliament in December, 1985.

APEDA is mandated with the responsibility of export promotion and development of the following scheduled products:

- Fruits, Vegetables and their Products.
- Meat and Meat Products.
- Poultry and Poultry Products.
- Dairy Products.
- Confectionery, Biscuits and Bakery Products.
- Honey, Jaggery and Sugar Products.
- Cocoa and its products, chocolates of all kinds.
- Alcoholic and Non-Alcoholic Beverages.
- Cereal and Cereal Products.
- Groundnuts, Peanuts and Walnuts.

June 28, 2019

- Pickles, Papads and Chutneys.
- Guar Gum.
- Floriculture and Floriculture Products.
- Herbal and Medicinal Plants.

In addition to this, APEDA has been entrusted with the responsibility to monitor import of sugar.

Q.4) Consider the following statements with respect to 'CAFÉ' Regulations

1. It is aimed at improving fuel efficiency of vehicles by lowering carbon dioxide emissions.
2. CAFE regulations in India came into force from 2017.

Select the correct statements

- a) 1 Only
- b) 2 Only
- c) Both 1 and 2
- d) Neither 1 nor 2

Q.4) Solution (c)

CAFE or Corporate Average Fuel Efficiency/Economy regulations are in force in many advanced as well as developing nations, including India. They aim at lowering fuel consumption (or improving fuel efficiency) of vehicles by lowering carbon dioxide (CO₂) emissions, thus serving the twin purposes of reducing dependence on oil for fuel and controlling pollution.

Corporate Average refers to sales-volume weighted average for every auto manufacturer. The norms are applicable for petrol, diesel, LPG and CNG passenger vehicles. CAFE regulations in India came into force from April 1, 2017. Under this, average corporate CO₂ emission must be less than 130 gm per km till 2022 and below 113 gm per km thereafter.

Q.5) Consider the following statements with respect to 'Jal Shakti Abhiyan'

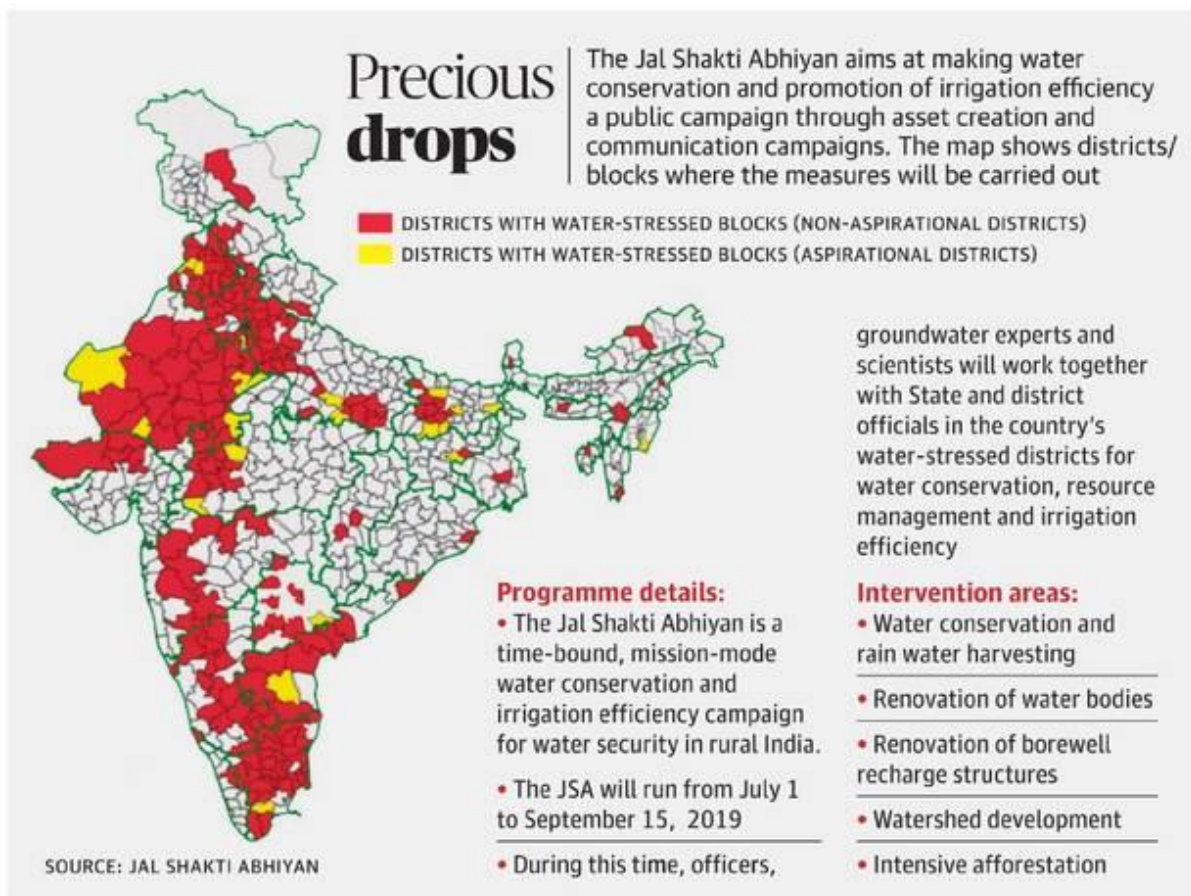
1. It is a time-bound, mission mode, water conservation and irrigation efficiency campaign for water security in rural India
2. It has a component of asset creation and communication campaigns

June 28, 2019

Select the correct statements

- a) 1 Only
- b) 2 Only
- c) Both 1 and 2
- d) Neither 1 nor 2

Q.5) Solution (c)



Source: <https://www.thehindu.com/news/national/govt-to-start-jal-shakti-abhiyan-for-255-water-stressed-districts-from-july-1/article28159138.ece>