

Q.1) Which of the following species can be generally found in the Chakrashila Wildlife Sanctuary, Assam?

- a) Golden Langur
- b) Forest Owlet
- c) Hangul
- d) Olive Ridley Turtle

Q.1) Solution (a)

Chakrashila Wildlife is a wildlife sanctuary falling under Dhubri and Kokrajhar districts of Assam. It is famous for the golden langur and is the second protected habitat for golden langur in India.

Source: <https://www.thehindu.com/sci-tech/energy-and-environment/golden-langur-to-get-fruits-of-mgnrega/article27699541.ece>

Q.2) Consider the following statements with respect to 'Nord Stream'

1. It is a river interlinking project to tackle global warming
2. It is an initiative of all the Scandinavian countries

Select the correct statements

- a) 1 Only
- b) 2 Only
- c) Both 1 and 2
- d) Neither 1 nor 2

Q.2) Solution (d)

It is an offshore natural gas pipeline from Vyborg in the Russian Federation to Greifswald in Germany that is owned and operated by Nord Stream AG, whose majority shareholder is the Russian state company Gazprom. The project includes two parallel lines. The first line was laid by May 2011 and was inaugurated in 2011. The second line was laid in 2011–2012 and was inaugurated in 2012. At 1,222 kilometres (759 mi) in length, it is the longest sub-sea pipeline in the world, surpassing the Langeled pipeline.

The project, termed Nord Stream 2, has been opposed by the United States and several Eastern European countries because of concerns that it would increase Russia's influence in the region.



Source: <https://www.thehindu.com/opinion/editorial/st-petersburg-consensus/article27705948.ece>

Q.3) Which of the following statements is/are correct?

1. Nigeria is India's largest trading partner in Africa.
2. Nigeria is world's sixth largest oil exporter.

Select the correct statements

- a) 1 Only
- b) 2 Only
- c) Both 1 and 2
- d) Neither 1 nor 2

Q.3) Solution (c)

Both the statements are correct.

Source: <https://www.thehindu.com/opinion/op-ed/a-clear-arc-from-india-to-nigeria/article27705956.ece>

Q.4) Which of the following statements is/are correct?

1. NITI Aayog was formed via a resolution of the Union Cabinet as a premier policy 'Think Tank' of the Government of India to provide directional and policy inputs.
2. Team India Hub is NITI Aayog's creation which leads the engagement of states with the Central government.

Select the correct statements

- a) 1 Only
- b) 2 Only
- c) Both 1 and 2
- d) Neither 1 nor 2

Q.4) Solution (c)

The National Institution for Transforming India, also called NITI Aayog, was formed via a resolution of the Union Cabinet in 2015. NITI Aayog is the premier policy 'Think Tank' of the Government of India, providing both directional and policy inputs. While designing strategic and long term policies and programmes for the Government of India, NITI Aayog also provides relevant technical advice to the Centre and States.

The Government of India, in keeping with its reform agenda, constituted the NITI Aayog to replace the Planning Commission instituted in 1950. This was done in order to better serve the needs and aspirations of the people of India. An important evolutionary change from the past, NITI Aayog acts as the quintessential platform of the Government of India to bring States to act together in national interest, and thereby fosters Cooperative Federalism.

At the core of NITI Aayog's creation are two hubs – Team India Hub and the Knowledge and Innovation Hub. The Team India Hub leads the engagement of states with the Central government, while the Knowledge and Innovation Hub builds NITI's think-tank capabilities. These hubs reflect the two key tasks of the Aayog.

Source: <https://www.thehindu.com/opinion/op-ed/is-niti-aayog-old-wine-in-a-new-bottle/article27704979.ece>

Q.5) Which of the following statements is/are correct?

1. Ministry of Home Affairs implements the Scheme of “Development of Particularly Vulnerable Tribal Groups (PVTGs)” exclusively for them.
2. PVTGs reside in all the states and Union Territories of India

Select the correct statements

- a) 1 Only
- b) 2 Only
- c) Both 1 and 2
- d) Neither 1 nor 2

Q.5) Solution (d)

75 tribal groups have been categorized by Ministry of Home Affairs as Particularly Vulnerable Tribal Groups (PVTGs). PVTGs reside in 18 States and UT of A&N Islands. The Ministry of Tribal Affairs implements the Scheme of “Development of Particularly Vulnerable Tribal Groups (PVTGs)” exclusively for them .

Q.6) Which of the following statements with respect to ‘RBI’s Prudential Framework for Resolution of Stressed Assets’ is/are correct?

1. It is applicable to Scheduled Commercial Banks Only.
2. Banks have a review period of 2 days after a borrower defaults to decide on the resolution strategy.

Select the correct statements

- a) 1 Only
- b) 2 Only
- c) Both 1 and 2
- d) Neither 1 nor 2

Q.6) Solution (d)

Banks will now have a review period of 30 days after a borrower defaults to decide on the resolution strategy, as compared to the one-day norm earlier. They will also have the freedom to decide whether or not to drag a defaulter to the insolvency court if resolution does not take place within 180 days of default. Banks had no such option earlier.

The provisions of these directions shall apply to the following entities:

- Scheduled Commercial Banks (excluding Regional Rural Banks);
- All India Term Financial Institutions (NABARD, NHB, EXIM Bank, and SIDBI);
- Small Finance Banks; and,
- Systemically Important Non-Deposit taking Non-Banking Financial Companies (NBFC-ND-SI) and Deposit taking Non-Banking Financial Companies (NBFC-D)

Source: <https://rbi.org.in/Scripts/NotificationUser.aspx?Id=11580&Mode=0>

Q.7) 'Kunming Initiative' is also referred to

- a) BCIM Forum
- b) ASEAN
- c) BIMSTEC
- d) BBIN Initiative

Q.7) Solution (a)

The BCIM Forum on Regional Cooperation, earlier known as the 'Kunming Initiative', is a 'Track II' exercise involving scholars, business leaders, tourism experts, policy experts and technical personnel', along with government officials, which aims to explore and promote cooperation between Bangladesh, China, India and Myanmar, focusing on their contiguous regions. It represents the combined endeavour by the four countries to increase connectivity, culture, trade and tourism ties and people-to-people contact among them, in the border regions in particular. The BCIM project also hopes to address issues of trans-border crime, such as drug-trafficking, gun-running, illegal immigration and so on through increased inter-country cooperation and greater harmonization of border policies.

Q.8) Consider the following statements with respect to 'No Frills accounts'

1. The No Frills account is aimed to offer the most basic banking service to those from the low-income backgrounds.
2. Banks cannot offer cheque book facility to the no-frills account holders.

Select the correct statements

- a) 1 Only
- b) 2 Only
- c) Both 1 and 2
- d) Neither 1 nor 2

Q.8) Solution (a)

In an attempt at financial inclusion, the RBI launched the “No Frills” account in 2005. The No Frills account aimed to offer the most basic banking service to those from the low-income backgrounds. The concept was formulated as means of providing individuals from low-income backgrounds the opportunity to benefit from the credit and savings programs offered by most financial institutions.

RBI has allowed banks to offer cheque book facility and other services to the no-frills account holders, but said they could not ask such account holders to maintain any minimum balance for such services.

Q.9) Consider the following statements with respect to ‘Lead Bank’ Scheme

1. It was introduced during the 1991 reforms
2. It was started for providing adequate banking and credit in rural areas through an ‘area approach’, with one bank assigned for one area

Select the correct statements

- a) 1 Only
- b) 2 Only
- c) Both 1 and 2
- d) Neither 1 nor 2

Q.9) Solution (b)

The Lead Bank Scheme, introduced towards the end of 1969, envisages assignment of lead roles to individual banks (both in public sector and private sector) for the districts allotted to them. A bank having a relatively large network of branches in the rural areas of a given district and endowed with adequate financial and manpower resources has generally been entrusted with the lead responsibility for that district.

The Lead Bank scheme was started for providing adequate banking and credit in rural areas through an 'area approach'.

Q.10) The term 'Additive Manufacturing (AM)' is associated with

- a) Fruit based processed food
- b) 3D Printing
- c) Generic Drugs
- d) Defence Industrial Corridors

Q.10) Solution (b)

Additive Manufacturing (AM) is an appropriate name to describe the technologies that build 3D objects by adding layer-upon-layer of material.

Q.11) Which of the following statements is/are correct?

1. Although cyclones affect the entire coast of India the East Coast is more prone compared to the West Coast.
2. Over 90 % of the cyclones that develop over the Arabian Sea approach the West Coast of India.

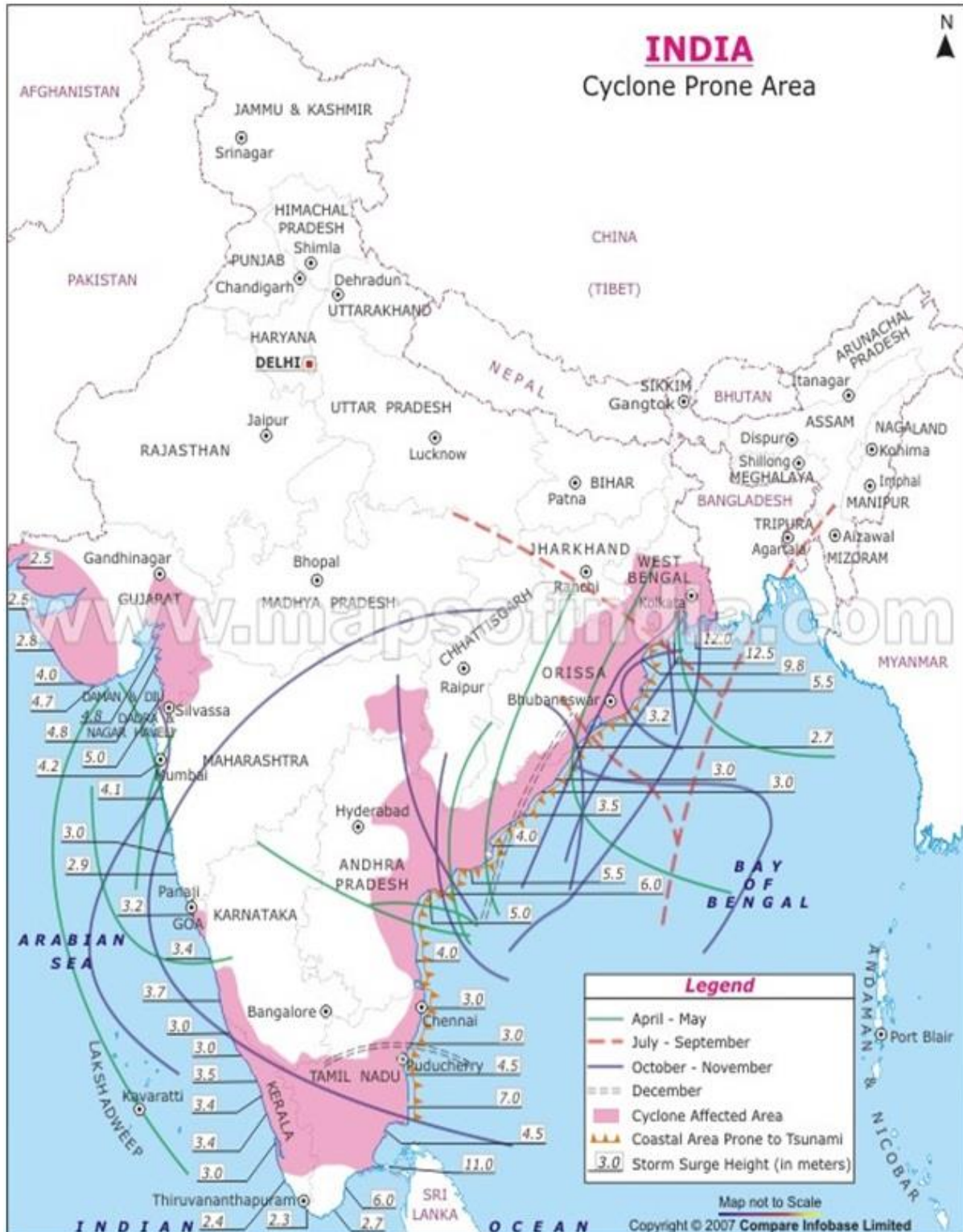
Select the correct statements

- a) 1 Only
- b) 2 Only
- c) Both 1 and 2
- d) Neither 1 nor 2

Q.11) Solution (a)

Cyclones occur in the month of May-June and October-November, with primary peak in November and secondary peak in May. Although cyclones affect the entire coast of India the East Coast is more prone compared to the West Coast.

Only 25 % of the cyclones that develop over the Arabian Sea approach the West Coast. In the pre-monsoon season, corresponding figures are 25 percent over Arabian sea and 30 percent over Bay of Bengal. Recurring cyclones account for large number of deaths, loss of livelihood opportunities, loss of public and private property and severe damage to infrastructure, thus seriously reversing the developmental gains at regular intervals.



Q.12) Which of the following statements is/are correct with respect to 'Tropical Cyclones'?

1. It helps to maintain equilibrium in the Earth's troposphere
2. It helps maintain a relatively stable and warm temperature worldwide
3. It helps relieve drought conditions

Select the correct statements

- a) 1 and 2
- b) 2 and 3
- c) 1 and 3
- d) All of the above

Q.12) Solution (d)

Although Tropical cyclones are known for destruction they cause, when they strike they also bestow certain benefits to the climatic conditions of that area such as

- Relieve drought conditions.
- Carry heat and energy away from the tropics and transport it towards temperate latitudes, thus helps to maintain equilibrium in the Earth's troposphere and
- Maintain a relatively stable and warm temperature worldwide.

Q.13) Which of the following statements with respect to 'Leader of Opposition (LoP)' is are correct?

1. The first LoP was designated only in 1991
2. To be the LoP in Lok Sabha, the party needs to have more than 100 seats

Select the correct statements

- a) 1 Only
- b) 2 Only
- c) Both 1 and 2
- d) Neither 1 nor 2

Q.13) Solution (d)

The first LoP was designated only in 1969 and there was no such post in the fifth (1971-77), seventh (1980-84) and eighth (1984-89) Lok Sabha.

However, a legal debate was sparked in 2014 when the Speaker denied the LoP position to the Congress - the largest opposition party with 44 members - on the ground that it did not have the required 10 per cent members (55 of 545) in the Lok Sabha. Now the Congress has declared that it would not seek the position for falling short of the 55-mark (it won only 52) in the 17th Lok Sabha.

Q.14) Consider the following statements with respects 'Pro tem Speaker'

1. The appointment of the Pro Tem Speaker needs no approval of the President.
2. In absence of the Speaker, the first priority to act as a Speaker is given to the Pro Tem Speaker.

Select the correct statements

- a) 1 Only
- b) 2 Only
- c) Both 1 and 2
- d) Neither 1 nor 2

Q.14) Solution (d)

After a general election and the formation of a new government, a list of senior Lok Sabha members prepared by the Legislative Section is submitted to the Minister of Parliamentary Affairs, who selects a pro tem speaker. The appointment has to be approved by the President.

The first meeting after the election when the Speaker and the Deputy Speaker are selected by members of the Parliament is held under the pro tem Speaker. In absence of the Speaker, the Deputy Speaker acts as Speaker and in the absence of both a committee of six members selected by the Speaker will act as Speaker according to their seniority.

Q.15) 'VG Kannan Committee' was in news recently. It is associated with

- a) New Education Policy
- b) ATM interchange fee
- c) Inter-creditor Agreement
- d) Country-by-Country Report

Q.15) Solution (b)

The RBI has set up a six-member committee, headed by VG Kannan, Chief Executive, Indian Banks' Association, to review the ATM interchange fee structure. It aims for giving a fillip to ATM deployment in unbanked areas.

Q.16) Consider the following statements with respect to 'Security and Growth for All in the Region'

1. It is an initiative of the 'ASEAN+6'
2. It is the brainchild of India to specifically boost India-ASEAN trade relations
3. It was launched during the 12th ASEAN India Summit

Select the correct statements

- a) 1 Only
- b) 1 and 3
- c) 1, 2 and 3
- d) None of the above

Q.16) Solution (d)

SAGAR is a term coined by PM Modi in 2015 during his Mauritius visit with a focus on blue economy. It is a maritime initiative which gives priority to Indian Ocean region for ensuring peace, stability and prosperity of India in Indian Ocean region. It is in line with the principles of Indian Ocean Rim Association.

Source: <https://www.thehindu.com/todays-paper/tp-opinion/values-to-live-by/article27893792.ece>

Q.17) Which of the following statements with respect to 'National Security Council'?

1. It is a three member constitutional body.
2. It is headed by the Union Minister of Home Affairs.

Select the correct statements

- a) 1 Only
- b) 2 Only
- c) Both 1 and 2
- d) Neither 1 nor 2

Q.17) Solution (d)

The National Security Council (NSC) of India is an executive government agency tasked with advising the Prime Minister's Office on matters of national security and strategic interest. It was established by the former prime minister of India Atal Bihari Vajpayee in 1998, with Brajesh Mishra as the first National Security Advisor. Prior to the formation of the NSC, these activities were overseen by the Principal Secretary to the preceding Prime Minister.

Besides the National Security Advisor (NSA), the Deputy National Security Advisors (DNSA), the Ministers of Defence, External Affairs, Home, Finance of the Government of India, and the Vice Chairman of the NITI Aayog are members of the National Security Council. Other members may be invited to attend its monthly meetings, as and when required.

The NSC is the apex body of the three-tiered structure of the national security management system in India. The other two tiers are the Strategic Policy Group, and the National Security Advisory Board.

Source: <https://www.thehindu.com/news/national/ajit-doval-reappointed-as-national-security-advisor/article27413131.ece>

Q.18) Consider the following statements with respect to 'Central Administrative Tribunal'

1. The Central Administrative Tribunal is to be headed by the retired Chief Justice of India.
2. The Central Administrative Tribunal is empowered to frame its own rules of procedure and practice.

Select the correct statements

- a) 1 Only
- b) 2 Only
- c) Both 1 and 2
- d) Neither 1 nor 2

Q.18) Solution (b)

It was established in 1985 under Section 29 of the Administrative Tribunals Act, 1985.

It is a multi-member body consisting of Chairman and members.

The Chairman is normally a retired Chief Justice of the High Court.

The Tribunal is guided by the principles of natural justice in deciding cases and is not bound by the procedure, prescribed by the Civil Procedure Code. The Central Administrative Tribunal is empowered to frame its own rules of procedure and practice.

Source: <https://www.thehindu.com/news/cities/Delhi/cat-can-exercise-same-powers-as-hc/article27430623.ece>

Q.19) Which of the following statements is/are correct?

1. The Puducherry legislature was created through a parliamentary law, based on an enabling provision in Article 239A of the Constitution
2. The Governor of Tamil Nadu is the administrator of the Union Territory of Puducherry

Select the correct statements

- a) 1 Only
- b) 2 Only
- c) Both 1 and 2
- d) Neither 1 nor 2

Q.19) Solution (a)

The Puducherry legislature was created through a parliamentary law, based on an enabling provision in Article 239A of the Constitution. The Government of Union Territories Act, 1963 provides for a Legislative Assembly of Puducherry with a Council of Ministers to govern the Union Territory of Pondicherry. The same Act also says that the UT will be administered by the President of India through an Administrator (LG). The Centre is represented by the Lt Governor.

Source: <https://www.thehindu.com/news/cities/puducherry/sc-issues-notice-to-puducherry-cm-in-power-tussle-matter/article27442882.ece>

Q.20) 'Vikramshila Gangetic Dolphin Sanctuary is located in which of the following states?

- a) Gujarat
- b) Andaman and Nicobar Islands
- c) Bihar
- d) Arunachal Pradesh

Q.20) Solution (c)

India has a sanctuary for conservation of Gangetic Dolphin, Vikramshila Gangetic Dolphin Sanctuary, located in Bhagalpur District of Bihar.

Q.21) Consider the following statements with respect to 'Parthenogenesis'

1. It is a natural form of asexual reproduction
2. It takes place in plants only

Select the correct statements

- a) 1 Only
- b) 2 Only
- c) Both 1 and 2
- d) Neither 1 nor 2

Q.21) Solution (a)

Parthenogenesis is a natural form of asexual reproduction in which growth and development of embryos occur without fertilization. In animals, parthenogenesis means development of an embryo from an unfertilized egg cell. In plants parthenogenesis is a component process of apomixis.

Parthenogenesis occurs naturally in some plants, some invertebrate animal species (including nematodes, water fleas, some scorpions, aphids, some mites, some bees, some Phasmida and parasitic wasps) and a few vertebrates (such as some fish, amphibians, reptiles and very rarely birds). This type of reproduction has been induced artificially in a few species including fish and amphibians.

Q.22) Which of the following states can be referred to as the 'Molasses Basin'?

- a) Mizoram
- b) Goa
- c) Tamil Nadu
- d) Arunachal Pradesh

Q.22) Solution (a)

Q.23) Which of the following countries do not open into the 'Yellow Sea'?

- a) China
- b) North Korea
- c) South Korea
- d) Mongolia

Q.23) Solution (d)



Q.24) 'Gahirmatha rookery' and 'Mouth of rivers Rushikulya & Devi' is often seen in news, in the context of

- Kharai Camel
- Olive Ridley Turtles
- Great Indian Bustard
- Sangai Deer

Q.24) Solution (b)

An important breeding area for olive Ridleys in the Indian Ocean along the Bay of Bengal is Odisha

- Gahirmatha rookery
- Devi river mouth and
- Rushikulya river mouth

Q.25) The town of Orchha was in news recently. Consider the following statements

1. The town depicts a peculiar style of the Bundela dynasty.
2. It is situated on the banks of the Betwa River.

Select the correct statements

- a) 1 Only
- b) 2 Only
- c) Both 1 and 2
- d) Neither 1 nor 2

Q.25) Solution (c)

Orchha is situated on the banks of the Betwa river. It is located around 80 km away from Tikamgarh district in Madhya Pradesh and 15 km from Jhansi of Uttar Pradesh. Orchha was built by King Rudra Pratap Singh of Bundela dynasty in the 16th century. The ancient town is famous for its Chaturbhuj Temple, Orchha fort complex, Raja Mahal among others.

The Bundela architecture has Mughal influence since the two dynasties were very close.

Q.26) Which of the following countries are party to the 'Shanghai Pact'?

1. India
2. Pakistan
3. Russia
4. Nepal

Select the correct code:

- a) 1 and 3
- b) 1, 2 and 3
- c) 2 and 4
- d) 2 and 3

Q.26) Solution (b)

The Shanghai Cooperation Organisation (SCO), or Shanghai Pact, is a Eurasian political, economic, and security alliance.

Members

- China
- Kazakhstan
- Kyrgyzstan
- Russia
- Tajikistan
- Uzbekistan
- India
- Pakistan

Q.27) Consider the following statements with respect to 'Rhizoctonia solani'

1. It is a plant pathogenic bacterium endemic to India.
2. It causes the Sheath Blight disease in rice.

Select the correct statements

- a) 1 Only
- b) 2 Only
- c) Both 1 and 2
- d) Neither 1 nor 2

Q.27) Solution (b)

Rhizoctonia solani is a fungal pathogen that causes the dreaded Sheath Blight disease in rice. Sheath Blight disease is a major issue in rice cultivation. It can cause up to 60% reduction in rice yield.

Source: <https://www.thehindubusinessline.com/news/science/scientists-unravel-the-fungus-responsible-for-sheath-blight-disease-in-rice/article27900452.ece>

Q.28) Consider the following statements with respect to 'Glanders Disease'

1. While people can get the disease, glanders is primarily a disease affecting horses
2. Glanders is an infectious disease that is caused by a virus

Select the correct statements

- a) 1 Only
- b) 2 Only
- c) Both 1 and 2
- d) Neither 1 nor 2

Q.28) Solution (a)

Glanders is an infectious disease that is caused by the bacterium *Burkholderia mallei*. While people can get the disease, glanders is primarily a disease affecting horses. It also affects donkeys and mules and can be naturally contracted by other mammals such as goats, dogs, and cats.

Source: <https://indianexpress.com/article/india/three-horses-test-positive-for-glanders-disease-euthanised-5781567/>

Q.29) 'Global Wage Report' is published by

- a) World Economic Forum
- b) World Bank
- c) International Labour Organisation
- d) International Monetary Fund

Q.29) Solution (c)

According to Global Wage Report 2018-19 published by International Labour Organization (ILO), women are paid most unequally in India, compared to men, when it comes to hourly wages for labour. This gap in wages, known as gender wage gap is the highest among 73 countries studied in the report.

Q.30) Which of the following statements is/are correct?

1. 'Strait of Hormuz' connects Red Sea and the Gulf of Aqaba
2. Qatar and Yemen opens up into the Persian Gulf

Select the correct statements

- a) 1 Only
- b) 2 Only
- c) Both 1 and 2
- d) Neither 1 nor 2

Q.30) Solution (d)

Strait of Hormuz is a strait between the Persian Gulf and the Gulf of Oman.

Yemen does not open up into the Persian Gulf.

Q.31) Consider the following statements with respect to 'United Nations Convention to Combat Desertification (UNCCD)'

1. The Convention addresses specifically the arid, semi-arid and dry sub-humid areas.
2. It stems from a direct recommendation of the Rio Conference's Agenda 21.

Select the correct statements

- a) 1 Only
- b) 2 Only
- c) Both 1 and 2
- d) Neither 1 nor 2

Q.31) Solution (c)

Established in 1994, the United Nations Convention to Combat Desertification (UNCCD) is the sole legally binding international agreement linking environment and development to sustainable land management.

The Convention, the only convention stemming from a direct recommendation of the Rio Conference's Agenda 21, was adopted in Paris, France on 17 June 1994 and entered into force in December 1996.

The Convention addresses specifically the arid, semi-arid and dry sub-humid areas, known as the drylands, where some of the most vulnerable ecosystems and peoples can be found.

Source: <https://www.thehindu.com/news/national/india-to-host-un-meet-on-land-degradation-in-september/article28022138.ece>

Q.32) 'Operation Sunrise' was carried out on which of the following borders?

- a) Sudan and South Sudan
- b) Indo-Myanmar
- c) Israel-Palestine
- d) North & South Korea

Q.32) Solution (b)

During "Operation Sunrise 2", the Indian and Myanmar armies coordinated with each other to bust camps of militant outfits, including the Kamtapur Liberation Organisation (KLO), the NSCN (Khaplang), the United Liberation Front of Assam (I) and the National Democratic Front of Boroland (NDFB).

Source: <https://economictimes.indiatimes.com/news/defence/armies-of-india-myanmar-target-ne-militants-in-coordinated-operation/articleshow/69810618.cms>

Q.33) Consider the following statements with respect to 'National Anti-Profiteering Authority (NAA)'

1. It was constituted to ensure that the benefit of input tax credit is passed on to the recipient by way of commensurate reduction in prices.
2. It has been constituted under Section 101 of the Integrated Goods and Services Tax Act, 2017.

Select the correct statements

- a) 1 Only
- b) 2 Only
- c) Both 1 and 2
- d) Neither 1 nor 2

Q.33) Solution (a)

The National Anti-Profitteering Authority (NAA) has been constituted under Section 171 of the Central Goods and Services Tax Act, 2017 to ensure that the reduction in rate of tax or the benefit of input tax credit is passed on to the recipient by way of commensurate reduction in prices.

Source: <https://www.thehindu.com/news/national/gst-council-to-give-one-year-extension-to-anti-profitteering-authority/article27955226.ece>

Q.34) 'Protocol on Establishment of Joint Ocean Observation Station' is seen in news in the context of

- a) Maldives
- b) Seychelles
- c) Socotra
- d) Comoros

Q.34) Solution (a)

The Joint Ocean Observation Station is a planned maritime observatory to be built on Makunudhoo in the Maldives, to be operated by the State Oceanic Administration of China and the Ministry of Environment and Energy of the Maldives.

Source: <https://timesofindia.indiatimes.com/india/in-relief-to-india-maldives-may-scrap-ocean-deal-with-china/articleshow/69818016.cms>

Q.35) Consider the following statements with respect to 'Neptunian Desert'

1. It is the region close to stars where no Neptune-sized exoplanets are found
2. This area receives strong irradiation from the star

Select the correct statements

- a) 1 Only
- b) 2 Only
- c) Both 1 and 2
- d) Neither 1 nor 2

Q.35) Solution (c)

The Neptunian Desert is broadly defined as the region close to stars (period < 2–4 days) where no Neptune-sized (> 0.1 MJ) exoplanets are found. This area receives strong irradiation from the star, meaning the planets do not retain their gaseous atmosphere as they evaporate leaving just a rocky core.

Source: <https://www.thehindu.com/sci-tech/science/forbidden-planet-discovered-in-neptunian-desert/article27332548.ece>

Q.36) Consider the following statements with respect to 'Bonn Challenge'

1. It is a global effort to bring 150 million hectares of the world's deforested and degraded land into restoration by 2020
2. It was launched in 2011 by the Government of India, WWF and IUCN.

Select the correct statements

- a) 1 Only
- b) 2 Only
- c) Both 1 and 2
- d) Neither 1 nor 2

Q.36) Solution (a)

The Bonn Challenge is a global effort to bring 150 million hectares of the world's deforested and degraded land into restoration by 2020, and 350 million hectares by 2030.

It was launched in 2011 by the Government of Germany and IUCN, and later endorsed and extended by the New York Declaration on Forests at the 2014 UN Climate Summit.

Underlying the Bonn Challenge is the forest landscape restoration (FLR) approach, which aims to restore ecological integrity at the same time as improving human well-being through multifunctional landscapes.

Q.37) Consider the following statements with respect to 'Libra', which was recently in news.

1. It is a cryptocurrency which can be used as a legal tender

2. It is launched by Germany

Select the correct statements

- a) 1 Only
- b) 2 Only
- c) Both 1 and 2
- d) Neither 1 nor 2

Q.37) Solution (d)

Facebook to launch a cryptocurrency called Libra.

The currency is designed not to be a speculative asset, like Bitcoin, but a form of digital money backed by a reserve of assets.

Read More - <https://qz.com/1645838/facebook-unveils-libra-its-new-global-cryptocurrency/>

Q.38) Consider the following statements with respect to 'Telecom Regulatory Authority of India (TRAI)'

1. It is a statutory body set up by the Government of India under section 3 of the Telecom Regulatory Authority of India Act, 1997.
2. It issues orders and directions on Direct to Home (DTH) services and mobile number portability.

Select the correct statements

- a) 1 Only
- b) 2 Only
- c) Both 1 and 2
- d) Neither 1 nor 2

Q.38) Solution (c)

The Telecom Regulatory Authority of India (TRAI) is a statutory body set up by the Government of India under section 3 of the Telecom Regulatory Authority of India Act, 1997. It is the

regulator of the telecommunications sector in India. It consists of a Chairperson and not more than two full-time members and not more than two part-time members.

One of its main objectives is to provide a fair and transparent environment that promotes a level playing field and facilitates fair competition in the market. TRAI regularly issues orders and directions on various subjects such as tariffs, interconnections, quality of service, Direct To Home (DTH) services and mobile number portability.

Q.39) Which of the following statements is/are correct?

1. Bitcoin has zero carbon footprint
2. Bitcoin and other cryptocurrencies is primarily based on the technology of 'Internet of Things (IoT)'

Select the correct statements

- a) 1 Only
- b) 2 Only
- c) Both 1 and 2
- d) Neither 1 nor 2

Q.39) Solution (d)

Bitcoin and other cryptocurrencies rely on blockchain technology, which enables a secure network without relying on a third party. Instead, so-called Bitcoin "miners" guarantee a system without fraud by validating new transactions. Miners solve puzzles for numerical signatures, a process that requires enormous amounts of computational power. In return, miners receive Bitcoin currency.

This process results in immense energy consumption, which translates into a significant carbon footprint.

Q.40) 'Operation Safed Sagar' is associated with

- a) Maldives
- b) Djibouti
- c) Mozambique

d) None of the above

Q.40) Solution (d)

Operation Safed Sagar was the code name assigned to the Indian Air Force's role in acting jointly with Ground troops during the Kargil war that was aimed at flushing out Regular and Irregular troops of the Pakistani Army from vacated Indian Positions in the Kargil sector along the Line of Control. It was the first large scale use of Airpower in the Jammu and Kashmir region since the Indo-Pakistani War of 1971.

Q.41) Which of the following countries can be termed as NATO allies?

1. Australia
2. New Zealand
3. South Korea
4. Israel

Select the correct code:

- a) 1, 2 and 3
- b) 2, 3 and 4
- c) 1, 3 and 4
- d) All of the above

Q.41) Solution (d)

US has moved a legislation in the Senate, seeking key amendment in the country's Arms Control Export Act to bring India at par with the US' Nato (North Atlantic Treaty Organization) allies— Israel, Australia, New Zealand and South Korea—when it comes to sale of high-tech military items.

Source: <https://economictimes.indiatimes.com/news/defence/bill-moved-in-us-senate-to-bring-india-on-a-par-with-nato-allies/articleshow/69816875.cms>

Q.42) 'The World Population Prospects 2019' is released by

- a) World Bank
- b) World Trade Organisation
- c) World Economic Forum
- d) United Nations

Q.42) Solution (d)

The 2019 Revision of World Population Prospects is the twenty-sixth round of official United Nations population estimates and projections that have been prepared by the Population Division of the Department of Economic and Social Affairs of the United Nations Secretariat.

Q.43) Consider the following statements with respect to 'Ājīvika Philosophy'

1. It was founded by Gosala Makkhaliputta
2. It is an ascetic sect that emerged in India about the same time as Buddhism and Jainism

Select the correct statements

- a) 1 Only
- b) 2 Only
- c) Both 1 and 2
- d) Neither 1 nor 2

Q.43) Solution (c)

Ajivika, an ascetic sect that emerged in India about the same time as Buddhism and Jainism and that lasted until the 14th century; the name may mean "following the ascetic way of life." It was founded by Goshala Maskariputra (also called Gosala Makkhaliputta), a friend of Mahavira, the 24th Tirthankara ("Ford-maker," i.e., saviour) of Jainism. His doctrines and those of his followers are known only from Buddhist and Jain sources, which state that he was lowborn and died after a quarrel with Mahavira shortly before the Buddha died.

Q.44) Consider the following statements with respect to 'Spectrum-Roentgen-Gamma (SRG) telescope'

1. It will create a three-dimensional X-ray map of the universe

2. It will help unveil unknown supermassive black holes, dark energy and stars

Select the correct statements

- a) 1 Only
- b) 2 Only
- c) Both 1 and 2
- d) Neither 1 nor 2

Q.44) Solution (c)

A joint team of German-Russian scientists will be launching a Spectrum-Roentgen-Gamma (SRG) space telescope. It will create a three-dimensional (3D) X-ray map of the universe and unveil unknown supermassive black holes, dark energy and stars.

The SRG telescope aims to detect up to 3 mn supermassive black holes from the Milky Way.

The telescope will be launched into space on a Russian-built Proton-M rocket from Baikonur Cosmodrome in Kazakhstan.

The mission will have two independent telescopes:

- A German-built eROSITA (Extended Roentgen Survey with an Imaging Telescope Array).
- A Russian-built ART-XC (Astronomical Roentgen Telescope X-ray Concentrator)

Q.45) 'Abujh Marias' primarily inhabit the state of

- a) Chhattisgarh
- b) Kerala
- c) Nagaland
- d) Manipur

Q.45) Solution (a)

Source: <https://www.downtoearth.org.in/news/forests/chhattisgarh-govt-begins-process-to-grant-fra-to-abujmarh-tribals-65022>

Q.46) Consider the following statements with respect to 'ReCAAP'

1. It is an initiative for facilitating the dissemination of piracy-related information.
2. It is a regional government-to-government agreement established at Mumbai

Select the correct statements

- a) 1 Only
- b) 2 Only
- c) Both 1 and 2
- d) Neither 1 nor 2

Q.46) Solution (a)

The Regional Cooperation Agreement on Combating Piracy and Armed Robbery against Ships in Asia (ReCAAP) is the first regional government-to-government agreement to promote and enhance cooperation against piracy and armed robbery against ships in Asia.

The ReCAAP Agreement was launched in November 2006 with 14 Asian Contracting Parties including North, Southeast, and South Asian countries. It has 20 Contracting Parties today, including Europe (Norway, the Netherlands, Denmark, and the United Kingdom), Australia, and the United States.

The ReCAAP Information Sharing Centre (ReCAAP ISC) was established in Singapore in 2006.

Q.47) Consider the following statements with respect to 'Coringa Wildlife Sanctuary'

1. The sanctuary is a part of the Cauvery estuary
2. It has extensive mangrove and dry deciduous tropical forest
3. It is home to the critically endangered white-backed vulture and the long billed vulture

Select the correct statements

- a) 1 and 2
- b) 2 and 3
- c) 1 and 3
- d) All of the above

Q.47) Solution (b)

Coringa Wildlife Sanctuary is a wildlife sanctuary and estuary situated in Andhra Pradesh, India. It is the second largest stretch of mangrove forests in India with 24 mangrove tree species and more than 120 bird species. It is home to the critically endangered white-backed vulture and the long billed vulture. In a mangrove ecosystem the water bodies of the ocean/sea and the river meet together at a certain point.

The sanctuary is a part of the Godavari estuary and has extensive mangrove and dry deciduous tropical forest.

Q.48) Consider the following statements with respect to 'IMEI number'

1. It is an all-inclusive piece of code that has a lot of information including the country of manufacturing, manufacturer, and model number.
2. The use of the IMEI can be acknowledged in reducing the effect of mobile phone thefts.

Select the correct statements

- a) 1 Only
- b) 2 Only
- c) Both 1 and 2
- d) Neither 1 nor 2

Q.48) Solution (c)

Every mobile phone comes with an IMEI number. Known as International Mobile Equipment Identity (IMEI) number, IMEI number is used to identify a device. If a phone is stolen, you can call your network provider and ask them to blacklist the device with the IMEI number. This process will make the device unusable for the thief (if stolen) even if the SIM is changed on the phone.

IMEI is an all-inclusive piece of code that has a lot of information including the country of manufacturing, manufacturer, and model number. It is important that we should never share our phone's IMEI number publicly.

Source: https://www.business-standard.com/article/current-affairs/you-can-soon-track-your-stolen-phone-govt-set-to-roll-out-imei-database-119062000291_1.html

Q.49) Consider the following statements

1. India and China account for over 90 percent of the world lychee production.
2. Of the total production of lychee in India, around 75 percent is contributed by Bihar.

Select the correct statements

- a) 1 Only
- b) 2 Only
- c) Both 1 and 2
- d) Neither 1 nor 2

Q.49) Solution (c)

The lychee (*Litchi chinensis* Sonn) an important sub-tropical evergreen fruit crop belonging to family Sapindaceae, is believed to have originated in China, where it has been grown in Southern Guangdong state for thousands of years. It is highly specific to climatic requirements and probably due to this reason its cultivation is restricted to few countries in the world. In India, lychee was introduced in the 18th century through Burma, and from there, it spread to many countries. India and China account for 91 percent of the world lychee production but it is mainly marketed locally.

Lychee being exacting in climatic and soil requirements has limited distribution. It is grown in the states of Bihar, Tripura, West Bengal, Uttar Pradesh, Punjab and Haryana. Of the total production of lychee in India, 74 percent is contributed by Bihar. The second largest lychee producing state is West Bengal followed by Tripura and Assam.

Q.50) Consider the following statements with respect to 'Torres Strait'

1. It is a strait which lies between Australia and New Zealand.
2. The strait links the Coral Sea to the east with the Arafura Sea and Gulf of Carpentaria in the west.

Select the correct statements

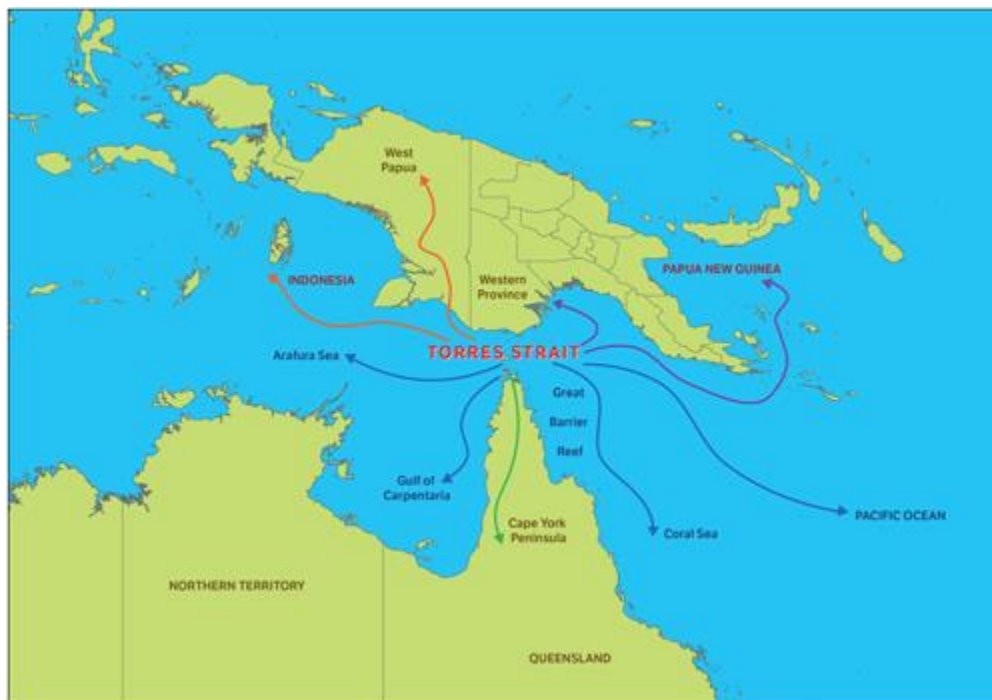
- a) 1 Only
- b) 2 Only

- c) Both 1 and 2
- d) Neither 1 nor 2

Q.50) Solution (b)

The Torres Strait is a strait which lies between Australia and the Melanesian island of New Guinea.

The strait links the Coral Sea to the east with the Arafura Sea and Gulf of Carpentaria in the west.

**Q.51) 'Hormozgan' was in news recently. Where is it located?**

- a) Syria
- b) Afghanistan
- c) Iran
- d) Yemen

Q.51) Solution (c)

Hormozgan Province is one of the 31 provinces of Iran.

Source: <https://www.thehindu.com/news/international/iran-revolutionary-guard-shoots-down-us-drone-amid-tensions/article28084732.ece>

Q.52) 'Washi' is a traditionally handmade paper that uses strands from three plants to create sheets known for their textures, warmth and absorption. Inscribed on UNESCO's intangible cultural heritage list, washi paper finds use in everyday things like clothing, art, printing and décor, to religious rituals and creating statues of Buddha. It is associated with which of the following countries?

- a) China
- b) Japan
- c) Kazakhstan
- d) India

Q.52) Solution (b)

Source: <https://www.thehindu.com/sci-tech/science/japans-washi-paper-torn-by-modern-life-struggles-to-attract-customers/article28089251.ece>

Q.53) 'Article 87 of the Constitution of India' deals with the Special address by the President to both Houses of Parliament during

1. Commencement of the first session after each general election
2. Commencement of the first session of each year

Select the correct statements

- a) 1 Only
- b) 2 Only
- c) Both 1 and 2
- d) Neither 1 nor 2

Q.53) Solution (c)

Article 87 of the constitution provides two instances when the President specially addresses both Houses of Parliament

- President of India addresses both the Rajya Sabha and the Lok Sabha at the beginning of the first Session after each general election when the reconstituted lower house meets for the first time
- President also addresses both the houses at the beginning of the first session of each year.

Q.54) Consider the following statements with respect to 'ICANN'

1. It is a global civil society coalition working to promote adherence to and full implementation of the Treaty on the Prohibition of Nuclear Weapons.
2. India has formally endorsed the ICAN Humanitarian Pledge.

Select the correct statements

- a) 1 Only
- b) 2 Only
- c) Both 1 and 2
- d) Neither 1 nor 2

Q.54) Solution (d)

The Internet Corporation for Assigned Names and Numbers (ICANN) is a non-profit organization responsible for coordinating the maintenance and procedures of several databases related to the namespaces and numerical spaces of the Internet, ensuring the network's stable and secure operation. ICANN performs the actual technical maintenance work of the Central Internet Address pools and DNS root zone registries pursuant to the Internet Assigned Numbers Authority (IANA) function contract. The contract regarding the IANA stewardship functions between ICANN and the National Telecommunications and Information Administration (NTIA) of the United States Department of Commerce ended on October 1, 2016, formally transitioning the functions to the global multi-stakeholder community.

Note – ICAN and ICANN are two different things.

Source: https://www.business-standard.com/article/technology/nasscom-and-global-internet-body-join-hands-for-global-research-in-iot-119061801176_1.html

Q.55) Which of the following statements with respect to is/are correct?

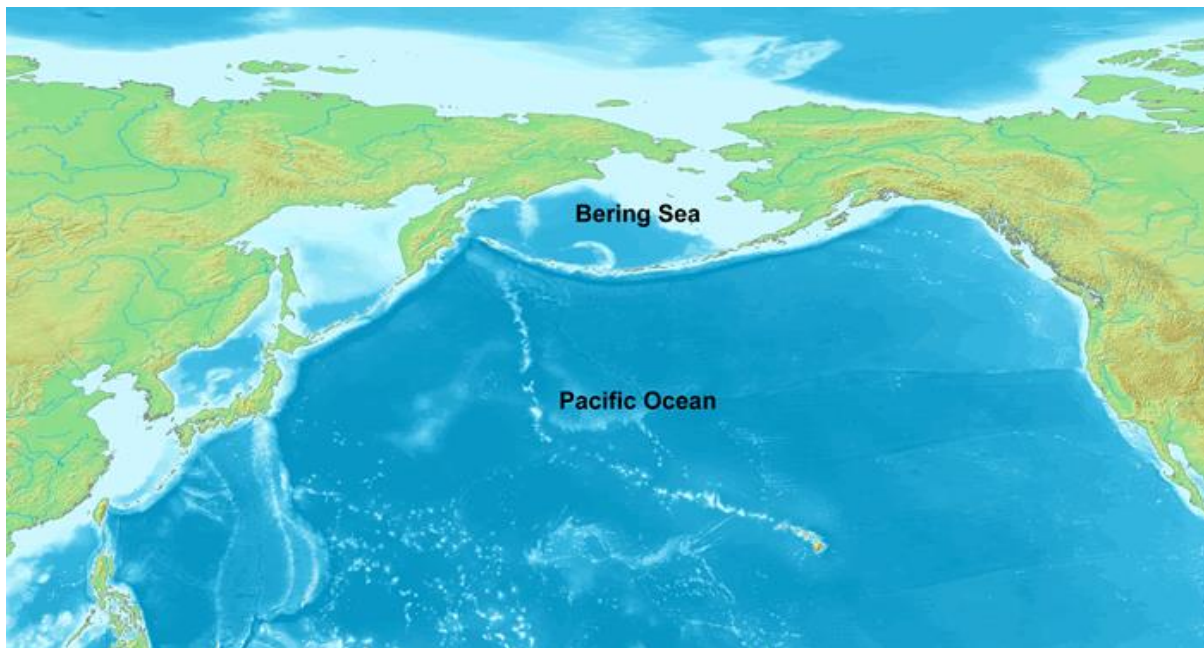
- a) 'Bering Sea' is a marginal sea of the Atlantic Ocean.
- b) The Bering Strait divides Eurasia and The Americas.
- c) Both (a) and (b)
- d) Neither (a) nor (b)

Q.55) Solution (b)

The Bering Sea is a marginal sea of the Pacific Ocean. It forms, along with The Bering Strait the divide between the two largest landmasses on Earth: Eurasia and The Americas.

It comprises a deep water basin, which then rises through a narrow slope into the shallower water above the continental shelves.

The Bering Sea is separated from the Gulf of Alaska by the Alaska Peninsula.



Q.56) 'Country of Particular Concern (CPC)' is a designation by the United States concerning

- a) Money laundering
- b) Terror Financing
- c) Violations of religious freedom
- d) Trade Deficit

Q.56) Solution (c)

Country of Particular Concern (CPC) is a designation by the United States Secretary of State (under authority delegated by the President) of a nation guilty of particularly severe violations of religious freedom.

Source: <https://www.thehindu.com/news/national/foreign-governments-have-no-right-to-question-india-on-religious-freedom-mea/article28115779.ece>

Q.57) Which of the following statements is/are correct?

1. Saudi Arabia is the only Arab country to be granted full membership of Financial Action Task Force (FATF).
2. FATF comprises of only one regional organisation, European Union.

Select the correct statements

- a) 1 Only
- b) 2 Only
- c) Both 1 and 2
- d) Neither 1 nor 2

Q.57) Solution (a)

Saudi Arabia has become 1st Arab country to be granted full membership of Financial Action Task Force (FATF).

FATF comprises of 37-member jurisdictions and 2 Regional Organisations namely Gulf Cooperation Council (GCC) and European Commission (EC).

Q.58) Consider the following statements with respect to 'Mauritania'

1. It opens up to the Mediterranean Sea
2. It is bordered by Senegal and Mali

Select the correct statements

- a) 1 Only
- b) 2 Only

- c) Both 1 and 2
- d) Neither 1 nor 2

Q.58) Solution (b)**Q.59) Consider the following statements with respect to 'Directorate of Revenue Intelligence (DRI)'**

1. Central Board of Indirect Taxes and Customs (CBIC) is the parent agency of the DRI.
2. DRI enforces provisions of the Customs Act only

Select the correct statements

- a) 1 Only
- b) 2 Only
- c) Both 1 and 2
- d) Neither 1 nor 2

Q.59) Solution (a)

The Directorate is run by officers from the Central Board of Indirect Taxes and Customs (CBIC) who are posted in its various Zonal Units as well as in Indian embassies abroad as part of the Customs Overseas Intelligence Network. It is headed by a Director General of the rank of Special Secretary to the Government of India.

DRI enforces provisions of the Customs Act in addition to over 50 other statutes including the NDPS Act, Arms Act, WMD Act etc. DRI is also a part of the Cabinet Secretariat's National Authority Chemical Weapons Convention, the Special Investigation Team on Black Money, the Task Force on Shell Companies, the Multi Agency Center (MAC) on National Security, the Ministry of Home Affairs/NIA's special wings on Left Wing Extremism Financing, as well as various inter-ministerial committees on Terror Financing, Coastal Security, Fake Indian Currency Notes, etc.

Q.60) Which of the following are applications of 'Carbon quantum dots'?

1. Bio imaging
2. Biosensor
3. Drug delivery

Select the correct statements

- a) 1 and 2
- b) 2 and 3
- c) 1 and 3
- d) All of the above

Q.60) Solution (d)

Carbon quantum dots (CQDs, C-dots or CDs) are small carbon nanoparticles (less than 10 nm in size) with some form of surface passivation.

Possessing such superior properties as low toxicity and good biocompatibility renders CQDs favorable materials for applications in bioimaging, biosensor and drug delivery. Based on the excellent optical and electronic properties, CQDs can also find applications in catalysis, sensors, and optronics.

Source: <https://www.thehindu.com/sci-tech/science/cancer-cell-detection-dots-developed-from-coal-in-assam/article28077873.ece>

Q.61) 'Ambubachi Mela' is associated with

- a) Kamakhya Temple
- b) Konark Temple
- c) Sabarimala Temple
- d) Mumbadevi Temple

Q.61) Solution (a)

Ambubachi Mela is a festival to mark the annual menstruation of the goddess which is held at Kamakhya temple.

Source: <https://www.thehindu.com/todays-paper/tp-national/reflection-of-faith/article28121344.ece>

Q.62) Consider the following statements with respect to 'Eastern Economic Forum'

1. It is an initiative of the 'ASEAN + 6' countries.
2. It is an initiative for the purpose of encouraging foreign investment

Select the correct statements

- a) 1 Only
- b) 2 Only
- c) Both 1 and 2
- d) Neither 1 nor 2

Q.62) Solution (b)

Eastern Economic Forum is an international forum held each year since 2015 in September, at Far Eastern Federal University in Vladivostok, Russia, for the purpose of encouraging foreign investment in the Russian Far East.

Q.63) Consider the following statements with respect to 'goAML'

1. It is an application to combat the global financial crime including money laundering and terrorist financing
2. It is developed by the United Nations Office on Drugs and Crime (UNODC)

Select the correct statements

- a) 1 Only
- b) 2 Only
- c) Both 1 and 2
- d) Neither 1 nor 2

Q.63) Solution (c)

The goAML application is one of the solutions offered by UNODC to combat the global financial crime including money laundering and terrorist financing. goAML is an integrated database and intelligent analysis system developed by the Enterprise Application Center Vienna (EAC-VN).

Read More - <https://unite.un.org/goaml/content/description>

Q.64) 'Kani tribe' was in news recently. It inhabits the state of

- a) Kerala
- b) Uttarakhand
- c) Odisha
- d) Rajasthan

Q.64) Solution (a)

Kani is a tribe living in the Western Ghats area of Kerala, India.

Their use of the forest plant arogyapacha (*trichopus zeylanicus*) as a key ingredient in a herbal remedy called Jeevani was noted by visiting scientists in the 1980s.

Source: <https://www.thehindu.com/news/national/kerala/ku-researchers-decode-arogyapacha-genome/article28119199.ece>

Q.65) Consider the following statements with respect to 'Chaukhandi Stupa'

1. It is located in Hampi, Karnataka
2. It is was built by the Vijaynagar Empire

Select the correct statements

- a) 1 Only
- b) 2 Only
- c) Both 1 and 2
- d) Neither 1 nor 2

Q.65) Solution (d)

Chaukhandi Stupa is a Buddhist stupa in Sarnath.

The Chaukhandi Stupa is thought originally to have been built as a terraced temple during the Gupta period between the 4th and 6th centuries to mark the site where Lord Buddha and his first disciples met traveling from Bodh Gaya to Sarnath. Later Govardhan, the son of a Raja Todarmal, modified the stupa to its present shape by building the octagonal tower to commemorate the visit of Humayun, the powerful Mughal ruler.

Q.66) 'Exercise Garuda' is bilateral exercise between India and

- a) Russia
- b) France
- c) Japan
- d) United States of America

Q.66) Solution (b)

Source: <https://timesofindia.indiatimes.com/india/iaf-contingent-flies-to-france-to-participate-in-ex-garuda-vi/articleshow/69947664.cms>

Q.67) Consider the following statements with respect to 'Impressed tortoise'

1. It is endemic to Western Ghats

2. It is listed as 'Critically Endangered' in the IUCN Red List

Select the correct statements

- a) 1 Only
- b) 2 Only
- c) Both 1 and 2
- d) Neither 1 nor 2

Q.67) Solution (d)

The impressed tortoise (*Manouria impressa*), occurs in mountainous forest areas in Southeast Asia in Myanmar, southern China, Thailand, Laos, Vietnam, Cambodia and Malaysia.

IUCN Status – Vulnerable

Q.68) 'Surjit Bhalla Committee' has recommended issue of 'Elephant Bonds'. Consider the following statements

1. It is meant to declare 'undisclosed income' with a mandatory condition to invest 50% of it in the bond.
2. It will be utilised only for infrastructure projects.

Select the correct statements

- a) 1 Only
- b) 2 Only
- c) Both 1 and 2
- d) Neither 1 nor 2

Q.68) Solution (c)

A high-level advisory group constituted by the government in September 2018 for suggestions to improve India's trade performance, has come up with a significant recommendation to tackle the menace of black money in the country.

Chaired by the renowned economist, Dr Surjit S Bhalla, the group has asked the government to allow people to declare their 'undisclosed income' with a mandatory condition to invest 50% in

a government bond, termed as Elephant Bond, which should be utilised only for infrastructure projects.

Q.69) Which of the following statements is/are correct?

1. The Portuguese colonised India in the 18th century
2. Portuguese colonies in India were limited to Eastern Coast of India

Select the correct code:

- a) 1 Only
- b) 2 Only
- c) Both 1 and 2
- d) Neither 1 nor 2

Q.69) Solution (d)

Portuguese colonies in India were limited to Goa, Daman, Diu, Dadra, Nagar Haveli and Anjediva Island.

The Portuguese colonised India in 1510, conquering many parts of the western coast and establishing several colonies in the east.

Q.70) Which of the following statements is/are correct?

1. UN General Assembly elects five non-permanent UNSC members out of a total of 10, for a two-year term.
2. India has never been a non-permanent member of the Security Council.

Select the correct statements

- a) 1 Only
- b) 2 Only
- c) Both 1 and 2
- d) Neither 1 nor 2

Q.70) Solution (a)

Each year, the General Assembly elects five non-permanent members out of a total of 10, for a two-year term. These 10 seats are distributed among the regions thus: five for African and Asian countries; one for Eastern European countries; two for Latin American and Caribbean countries; two for Western European and other countries.

India has been a non-permanent member of the Security Council eight time previously: 1950-51, 1967-68, 1972-73, 1977-78, 1984-85, 1991-92 and 2011-12. For the 2011-12 term, India won 187 of 190 votes after Kazakhstan stood down from its candidacy.

Q.71) Consider the following statements with respect to 'Proton Therapy'

1. It is a treatment that uses high-energy beams to treat tumors.
2. There is less radiation dose outside of the tumor compared to x-ray radiation

Select the correct statements

- a) 1 Only
- b) 2 Only
- c) Both 1 and 2
- d) Neither 1 nor 2

Q.71) Solution (c)

In the field of medical procedures, proton therapy, or proton radiotherapy, is a type of particle therapy that uses a beam of protons to irradiate diseased tissue, most often in the treatment of cancer. The chief advantage of proton therapy over other types of external beam radiotherapy is that as a charged particle the dose is deposited over a narrow range of depth, and there is minimal entry, exit, or scattered radiation dose.

Proton therapy is a type of external beam radiotherapy, and shares risks and side effects of other forms of radiation therapy. However the dose outside of the treatment region can be significantly less for deep-tissue tumors than X-ray therapy, because proton therapy takes full advantage of the Bragg peak.

Q.72) Which of the following statements is/are correct?

1. Housing Finance Companies are regulated by National Housing Bank.

2. Nidhi Companies are regulated by Ministry of Corporate Affairs.

Select the correct statements

- a) 1 Only
- b) 2 Only
- c) Both 1 and 2
- d) Neither 1 nor 2

Q.72) Solution (c)

Housing Finance Companies are regulated by National Housing Bank, Merchant Banker/Venture Capital Fund Company/stock-exchanges/stock brokers/sub-brokers are regulated by Securities and Exchange Board of India, and Insurance companies are regulated by Insurance Regulatory and Development Authority. Similarly, Chit Fund Companies are regulated by the respective State Governments and Nidhi Companies are regulated by Ministry of Corporate Affairs, Government of India.

Q.73) Consider the following statements with respect to 'Agricultural and Processed Food Products Export Development Authority (APEDA)

1. It was established under the Food Safety and Standards Act
2. It is mandated with the responsibility of export promotion and development of Guar Gum

Select the correct statements

- a) 1 Only
- b) 2 Only
- c) Both 1 and 2
- d) Neither 1 nor 2

Q.73) Solution (b)

The Agricultural and Processed Food Products Export Development Authority (APEDA) was established by the Government of India under the Agricultural and Processed Food Products Export Development Authority Act passed by the Parliament in December, 1985.

APEDA is mandated with the responsibility of export promotion and development of the following scheduled products:

- Fruits, Vegetables and their Products.
- Meat and Meat Products.
- Poultry and Poultry Products.
- Dairy Products.
- Confectionery, Biscuits and Bakery Products.
- Honey, Jaggery and Sugar Products.
- Cocoa and its products, chocolates of all kinds.
- Alcoholic and Non-Alcoholic Beverages.
- Cereal and Cereal Products.
- Groundnuts, Peanuts and Walnuts.
- Pickles, Papads and Chutneys.
- Guar Gum.
- Floriculture and Floriculture Products.
- Herbal and Medicinal Plants.

In addition to this, APEDA has been entrusted with the responsibility to monitor import of sugar.

Q.74) Consider the following statements with respect to 'CAFÉ' Regulations

1. It is aimed at improving fuel efficiency of vehicles by lowering carbon dioxide emissions.
2. CAFE regulations in India came into force from 2017.

Select the correct statements

- a) 1 Only
- b) 2 Only
- c) Both 1 and 2
- d) Neither 1 nor 2

Q.74) Solution (c)

CAFE or Corporate Average Fuel Efficiency/Economy regulations are in force in many advanced as well as developing nations, including India. They aim at lowering fuel consumption (or

improving fuel efficiency) of vehicles by lowering carbon dioxide (CO₂) emissions, thus serving the twin purposes of reducing dependence on oil for fuel and controlling pollution.

Corporate Average refers to sales-volume weighted average for every auto manufacturer. The norms are applicable for petrol, diesel, LPG and CNG passenger vehicles. CAFE regulations in India came into force from April 1, 2017. Under this, average corporate CO₂ emission must be less than 130 gm per km till 2022 and below 113 gm per km thereafter.

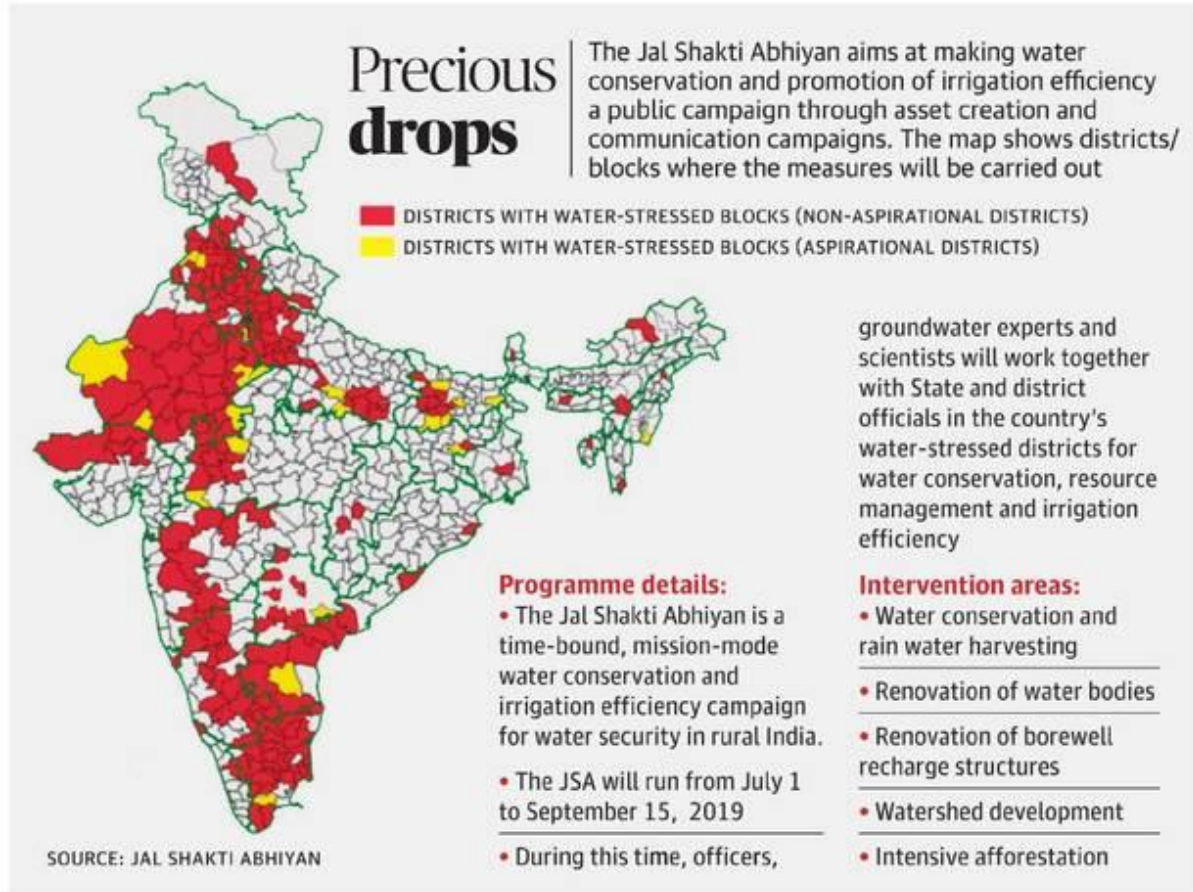
Q.75) Consider the following statements with respect to 'Jal Shakti Abhiyan'

1. It is a time-bound, mission mode, water conservation and irrigation efficiency campaign for water security in rural India
2. It has a component of asset creation and communication campaigns

Select the correct statements

- a) 1 Only
- b) 2 Only
- c) Both 1 and 2
- d) Neither 1 nor 2

Q.75) Solution (c)



Source: <https://www.thehindu.com/news/national/govt-to-start-jal-shakti-abhiyan-for-255-water-stressed-districts-from-july-1/article28159138.ece>

